



Biopsy of Colon Wall Using PET Image Fusion and eTRAX™ Needle Tip Tracking

BACKGROUND

Dr. Steen Karstrup
Roskilde Sygehus
Copenhagen University Hospital
Department of Diagnostic Radiology
Copenhagen, Denmark

Case:
Colon Wall Biopsy

Featured Product:
eTRAX Needle Tip Tracking System

CONSIDERATION FOR USE

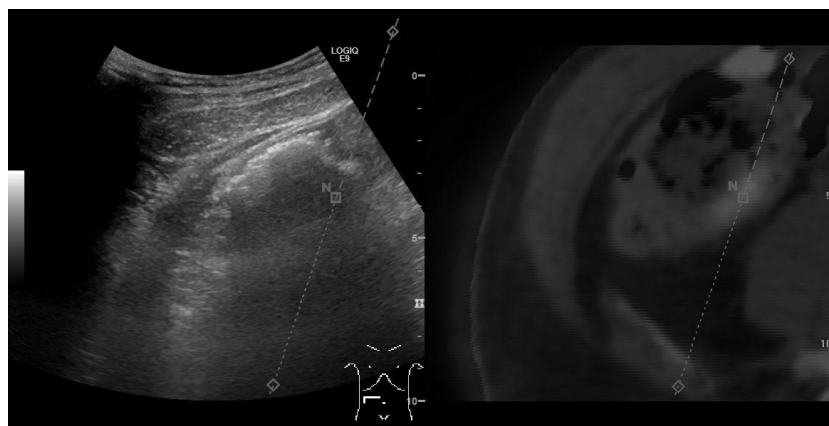
Using Volume Navigation on the LOGIQ E9, image fusion of 2D ultrasound and PET slice of the colonic wall was possible. eTRAX Needle Tip Tracking was useful for continuous visualization of the needle tip.

REQUIRED EQUIPMENT FOR EXAMINATION

- GE Healthcare LOGIQ E9 with Volume Navigation
- CIVCO eTRAX Needle Tip Tracking System

APPROACH TO EXAMINATION

Image fusion of a 2DUS and a PET slice of the colonic wall was obtained. Despite gas obscuring the anatomical region of interest, eTRAX Needle Tip Tracking enabled an on-screen projection of the future needle path and reveals the direction of travel with “N” representing the actual needle tip. Electromagnetic needle tip tracking was useful for continuous visualization of the needle tip as it was advanced toward the target.



Aided by the on-screen guidelines of eTRAX Needle Tip Tracking, continuous visualization of the needle tip was obtained despite gas obscuring the anatomical region of interest.

